



The Dynamic Air Crossover Switch is ideal whenever two different pneumatic conveying systems must be linked together for crossing over conveying lines to alternating use points. Since simultaneous conveying can be accomplished by utilizing one crossover switch, it simplifies the conveying line routing and equipment required whenever the crossover feature is required.

The smooth full-bore design maximizes system performance and provides the lowest pressure drop when pneumatically conveying through the switch. During conveying, all ports are sealed with proven inflatable seals so that two different pneumatic conveying systems can simultaneously convey through the crossover switch. Each hose connection to the switch includes a low-friction swivel for kink-free hose movement.

The Crossover Switch comes complete with position sensors and switches using an air operated 180° rotary actuator for port-to-port positioning.

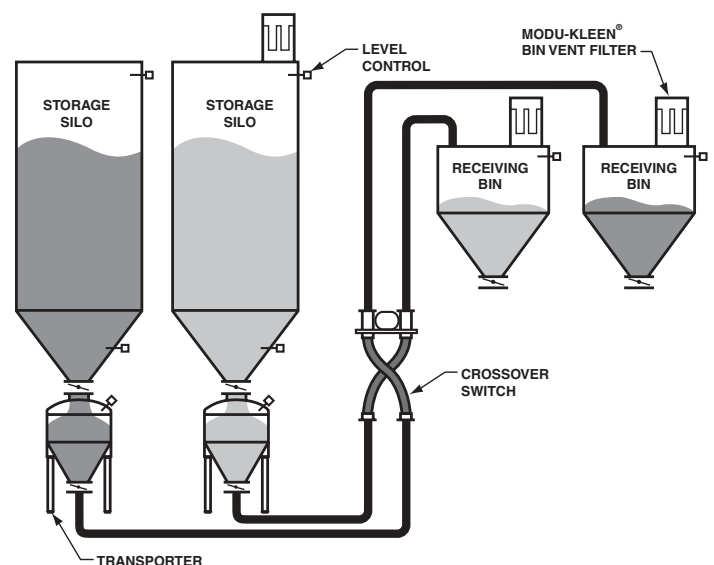
Features

- Full-bore design
- Inflatable seals
- Position sensors standard
- Air operated
- 100 PSIG design
- Conveys two ways
- Heavy-duty construction

The Crossover Switch will handle:

- | | |
|---------------------|------------------|
| ■ Alumina | ■ Gypsum |
| ■ Ball clay | ■ Iron oxide |
| ■ Barite | ■ Kaolin clay |
| ■ Bauxite | ■ Lime |
| ■ Bentonite | ■ Milk powder |
| ■ Borax | ■ PVC resin |
| ■ Calcium carbonate | ■ Quartz |
| ■ Cement | ■ Silica sand |
| ■ Feldspar | ■ Soda ash |
| ■ Fine coal | ■ Sodium sulfate |
| ■ Flour | ■ Sugar |
| ■ Fluorspar | ■ Talc |
| ■ Fly ash | ■ And More |

Typical Application



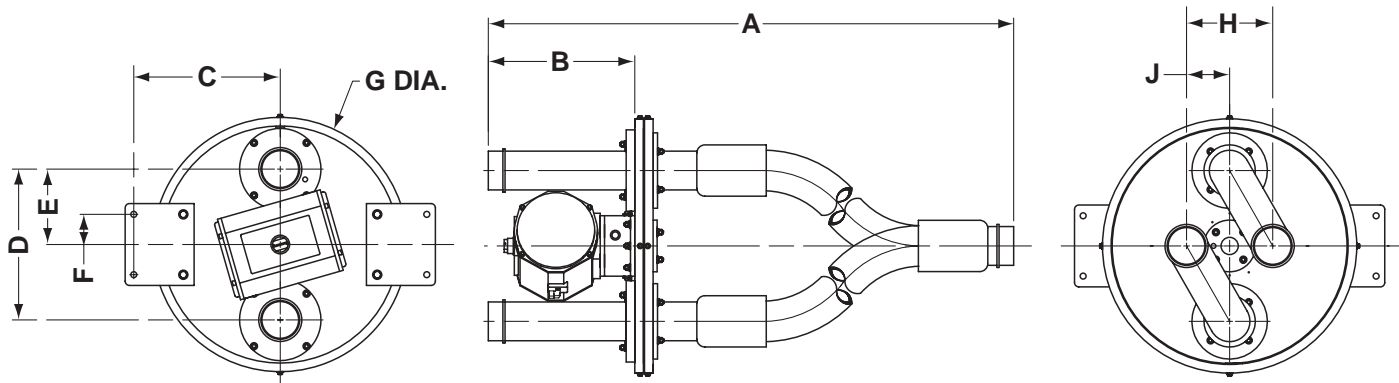
How the Crossover Switch works

An air-operated 180° rotary actuator moves the flexible hose of the Crossover Switch 180 degrees from the position #1 to the "diverted" position #2. After position indicators verify the position, the inflatable seals are pressurized to provide a positive, pressure-tight connection between the inlet ports and outlet ports.

Options

- Stainless steel or aluminum construction
- Food grade construction
- Custom hoses
- Explosion proof design
- Low voltage controls
- Sizes larger than 8"

Dimensions and Specifications



CONVEY LINE SIZE	CROSSOVER SWITCH DIMENSIONS - INCHES (MILLIMETERS)									SHIPPING WEIGHT LBS. (KG)
	A	B	C	D	E	F	G	H	J	
2"	66.00 (1676)	16.00 (406)	14.75 (375)	15.00 (381)	7.50 (191)	3.50 (89)	24.00 (610)	8.00 (203)	4.00 (102)	450 (204)
3"	66.00 (1676)	16.00 (406)	16.00 (406)	16.50 (419)	8.25 (210)	3.50 (89)	27.00 (686)	8.00 (203)	4.00 (102)	525 (238)
4"	77.75 (1975)	16.00 (406)	17.00 (432)	17.50 (445)	8.75 (222)	3.50 (89)	29.50 (749)	10.00 (254)	5.00 (127)	600 (272)
5"	83.00 (2108)	16.00 (406)	21.00 (533)	21.50 (546)	10.75 (273)	3.50 (89)	34.50 (876)	12.00 (305)	6.00 (152)	750 (341)
6"	83.00 (2108)	16.00 (406)	22.50 (572)	23.50 (597)	11.75 (298)	3.50 (89)	37.50 (953)	14.00 (356)	7.00 (178)	850 (386)
8"	96.50 (2451)	16.00 (406)	26.50 (673)	27.50 (699)	13.75 (349)	3.50 (89)	44.00 (1118)	18.00 (457)	9.00 (229)	1150 (522)

Dimensions and specifications will vary according to size and configuration and are subject to change without notice.

Power requirements

Electrical supply: 120 volt, single phase, 60 hertz

Air supply: 90-100 PSIG (6.2-6.9 barg)

Operating temperature

150° F (66° C)

Dynamic Air Conveying Systems® is a U.S. registered trademark of Dynamic Air Inc., St. Paul, MN USA.

© 2005, Dynamic Air Inc. • Bulletin 20417-1 (dm)

DYNAMIC AIR[®]
Conveying Systems

Corporate Headquarters

Dynamic Air Inc. • St. Paul, MN USA • +1 651 484-2900

Worldwide Offices

Australia • Brazil • China • United Kingdom

www.dynamicaire.com