



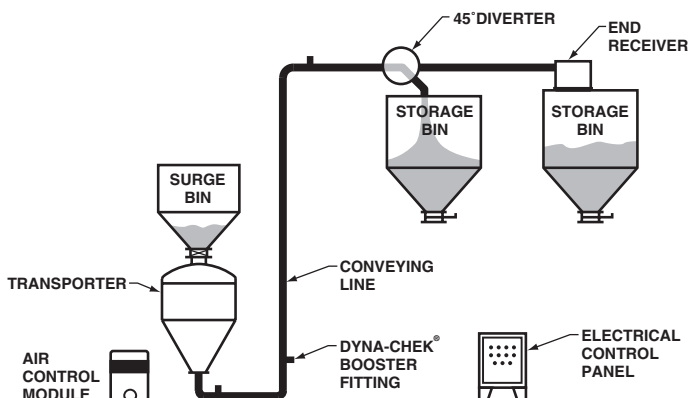
Divert air-conveyed material 45°

The 45° diverter is a high quality valve designed to automatically change the flow direction of pneumatically conveyed materials. The full bore design helps eliminate cross-contamination and conveying line resistance. The heavy-duty cast iron housing and abrasion-resistant rotor make it ideal for both abrasive and fragile materials. Inflatable seals at both inlet and outlet assure positive sealing, even at higher conveying pressures.

Features

- Full bore design
- Abrasion-resistant rotor
- Quiet, smooth operation
- Position sensors standard
- Designed for 100 PSIG
- Lightweight air actuator
- Rugged, heavy-duty construction
- Handles cohesive solids

Typical application

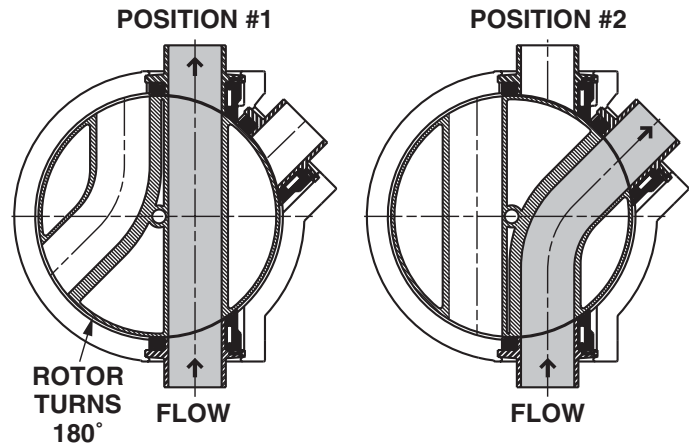


The 45° diverter will convey

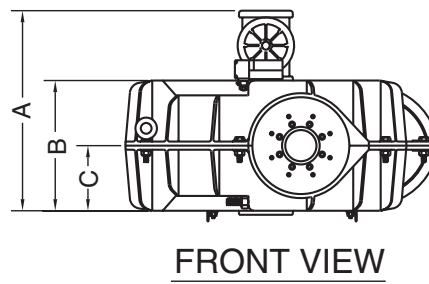
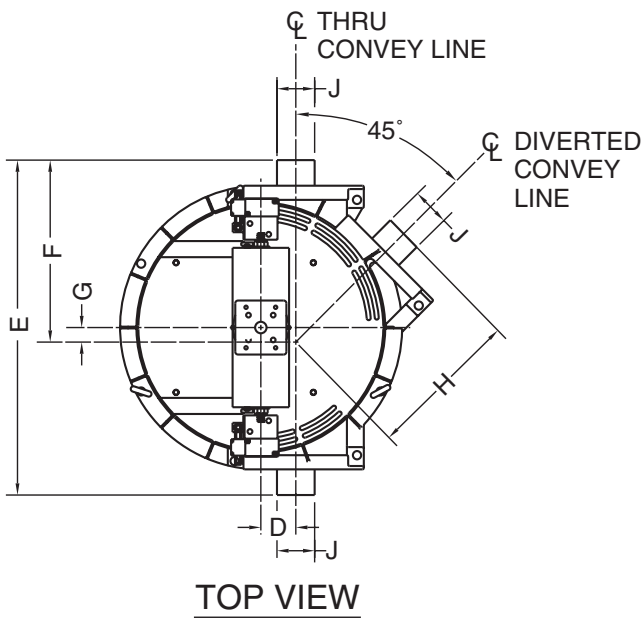
- | | | |
|---------------------|---------------|------------------|
| ■ Alumina | ■ Feldspar | ■ Milk powder |
| ■ Ball clay | ■ Fine coal | ■ PVC resin |
| ■ Barite | ■ Flour | ■ Quartz |
| ■ Bauxite | ■ Fluorspar | ■ Silica sand |
| ■ Bentonite | ■ Fly ash | ■ Soda ash |
| ■ Borax | ■ Gypsum | ■ Sodium sulfate |
| ■ Calcium carbonate | ■ Iron oxide | ■ Sugar |
| ■ Cement | ■ Kaolin clay | ■ Talc |
| | ■ Lime | ■ And more |

How the 45° Diverter works

An air operator moves the internal rotor of the 45° diverter 180 degrees from the "straight through" position #1 to the "off" position #2. After position indicators verify the position, the inflatable seals are pressurized to provide a positive, pressure-tight connection between the rotor and wear collars. In addition, pressure on all inflatable seals is monitored to ensure proper sealing prior to a conveying cycle.



Dimensions and specifications



Power requirements

Air supply: 90 to 100 PSIG (6.2 to 6.9 barg)

Electrical supply: 110/120 VAC, 50/60 Hz

SIZE	DIMENSIONS INCHES (MM)										SHIP WEIGHT LBS. (KG)
	A	B	C	D	E	F	G	H	J		
									OUTSIDE	INSIDE	
3"	18.62 (473)	12.12 (308)	6.06 (154)	3.25 (83)	31.00 (787)	16.85 (428)	1.35 (34)	14.15 (359)	3.50 (89)	2.90 (74)	446 (202)
4"	18.62 (473)	12.12 (308)	6.06 (154)	3.25 (83)	31.00 (787)	16.85 (428)	1.35 (34)	14.15 (359)	4.50 (114)	3.83 (97)	453 (205)
5"	18.62 (473)	12.12 (308)	6.06 (154)	3.25 (83)	31.00 (787)	16.85 (428)	1.35 (34)	14.15 (359)	5.56 (141)	4.81 (122)	468 (212)
6"	26.99 (686)	19.00 (483)	9.50 (241)	5.61 (142)	60.00 (1524)	32.33 (821)	2.33 (59)	27.67 (703)	6.62 (168)	6.06 (154)	2567 (1164)
8"	26.99 (686)	19.00 (483)	9.50 (241)	5.61 (142)	60.00 (1524)	32.33 (821)	2.33 (59)	27.67 (703)	8.62 (219)	7.98 (203)	3012 (1366)

Specifications subject to change without notice.

Dynamic Air Conveying Systems® is a registered trademark of Dynamic Air Inc., St. Paul, MN USA.

© 2003, Dynamic Air Inc.

Printed in U.S.A. • Bulletin 923-1 (2/7/03) (UK 3/08)

DYNAMIC AIR[®]
Conveying Systems

Corporate Headquarters

Dynamic Air Inc., 1125 Willow Lake Blvd., St. Paul, MN 55110-5193
Phone (651) 484-2900 • Fax (651) 484-7015

United Kingdom

Dynamic Air Ltd., 26 Peverel Drive, Granby, Milton Keynes, MK1 1QZ
Phone +44 (0)1908 622344 • Fax +44 (0)1908 646633

www.dynamicair.com