



Vent and collect dust in any contained vessel

The Modu-Kleen[®] Series 250 bin vent filter/dust collector is designed to vent bins, storage silos, mixers, blenders, pneumatic conveying systems of any type or any other device or process that must contain or control dust particles. It can meet the most stringent air pollution codes. The Modu-Kleen bin vent/dust collector is controlled by solid state electronics and is self cleaning for minimum maintenance.

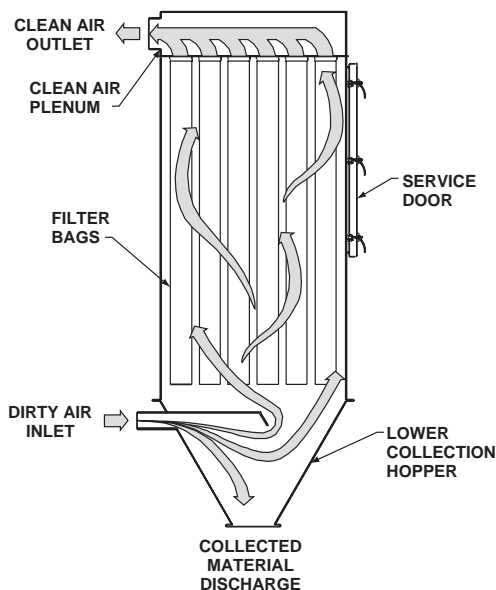
Cone jet diffuser improves filter efficiency

Built as an integral part of the bag cage, the cone jet diffuser directs a shock wave down the entire length of the bag during the cleaning cycle. This shock wave improves the Modu-Kleen bin vent/dust collector's efficiency when compared to venturi type dust collectors that direct the shock wave over only a portion of the bag. The filter bags are cleaned one row at a time, so the Modu-Kleen bin vent/dust collector can operate continuously. There is no need to shut down for cleaning.

Features

- Standard or quick release bag clamps
- Solid state sequencing timer
- Safety grid
- Heavy-duty, all welded construction
- Easy installation of bags and cages
- Cone jet diffuser provides 100% bag utilization
- 99%+ efficiency
- Uses standard available compressed air
- High air to cloth ratio
- Low maintenance

Typical application



How the Modu-Kleen bin vent/dust collector works

Dust laden air is drawn into the Modu-Kleen bin vent/dust collector by either a fan mounted on the discharge side of the dust collector, or by a positive air source such as a pneumatic conveying system. Air enters the dust collector through a bottom hopper or storage bin and passes up through the filter bags. Clean air then passes through the bags into the clean air plenum and out to the atmosphere. Filtered material then drops into the lower collection hopper.

The Modu-Kleen bin vent/dust collector will handle

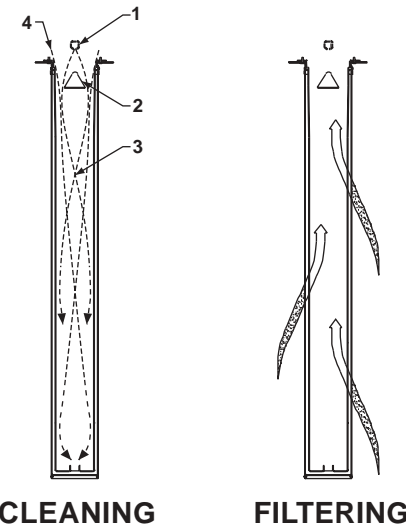
- | | | |
|---------------------|---------------|------------------|
| ■ Alumina | ■ Feldspar | ■ Milk powder |
| ■ Ball clay | ■ Fine coal | ■ PVC resin |
| ■ Barite | ■ Flour | ■ Quartz |
| ■ Bauxite | ■ Fluorspar | ■ Silica sand |
| ■ Bentonite | ■ Fly ash | ■ Soda ash |
| ■ Borax | ■ Gypsum | ■ Sodium sulfate |
| ■ Calcium carbonate | ■ Iron oxide | ■ Sugar |
| ■ Cement | ■ Kaolin clay | ■ Talc |
| | ■ Lime | ■ And More |

Filter bag cleaning cycle

High pressure compressed air is pulsed through the air supply line (1) and directed over the cone jet diffuser (2). This energy charged air (3) is directed downward against the interior of the filter bag, creating a shock wave. This shock wave is immediately followed by an inrush of secondary air (4) that creates a compression zone, causing the accumulated dust to drop into the bin or silo. After the cleaning cycle, the clean air passes through the plenum into the atmosphere.

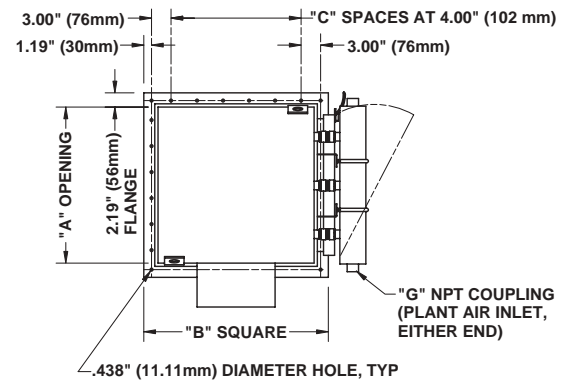
Options

- Explosion relief panels
- Stainless steel construction
- Pressure rated housings
- Negative pressure fan
- Special finishes
- Top load bags
- Static relief doors
- Special filter media

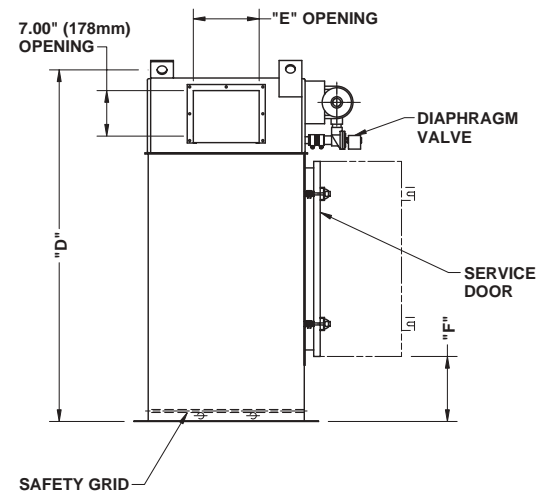


Dimensions and specifications

MODEL NO.	FILTER AREA	NO. OF BAGS	PLANT AIR 95-110 PSIG	DIMENSIONS							SHIP WEIGHT
				A	B	C	D	E	F	G	
36A-9	40 sq. ft. 3.7 sq. m	9	2.25 SCFM 3.8 SCMH	24.00" 610 mm	28.38" 721 mm	5	52.75" 1340 mm	10.00" 254 mm	10.00" 254 mm	1.00" 25 mm	350 lbs. 159 kg
60A-9	66 sq. ft. 6.1 sq. m	9	2.25 SCFM 3.8 SCMH	24.00" 610 mm	28.38" 721 mm	5	76.75" 1949 mm	10.00" 254 mm	14.00" 356 mm	1.00" 25 mm	450 lbs. 204 kg
84A-9	92 sq. ft. 8.5 sq. m	9	2.25 SCFM 3.8 SCMH	24.00" 610 mm	28.38" 721 mm	5	100.75" 2559 mm	10.00" 254 mm	38.00" 965 mm	1.00" 25 mm	525 lbs. 238 kg
36A-16	72 sq. ft. 6.7 sq. m	16	4.00 SCFM 6.8 SCMH	32.00" 813 mm	36.38" 924 mm	7	52.75" 1340 mm	10.00" 254 mm	10.00" 254 mm	1.00" 25 mm	475 lbs. 215 kg
60A-16	118 sq. ft. 11.0 sq. m	16	4.00 SCFM 6.8 SCMH	32.00" 813 mm	36.38" 924 mm	7	76.75" 1949 mm	10.00" 254 mm	14.00" 356 mm	1.00" 25 mm	625 lbs. 283 kg
84A-16	164 sq. ft. 15.2 sq. m	16	4.00 SCFM 6.8 SCMH	32.00" 813 mm	36.38" 924 mm	7	100.75" 2559 mm	10.00" 254 mm	38.00" 965 mm	1.00" 25 mm	750 lbs. 340 kg
36A-25	112 sq. ft. 10.4 sq. m	25	6.25 SCFM 10.6 SCMH	40.00" 1016 mm	44.38" 1127 mm	9	52.75" 1340 mm	25.00" 635 mm	10.00" 254 mm	1.00" 25 mm	650 lbs. 295 kg
60A-25	184 sq. ft. 17.1 sq. m	25	6.25 SCFM 10.6 SCMH	40.00" 1016 mm	44.38" 1127 mm	9	76.75" 1949 mm	25.00" 635 mm	14.00" 356 mm	1.00" 25 mm	825 lbs. 374 kg
84A-25	256 sq. ft. 23.7 sq. m	25	6.25 SCFM 10.6 SCMH	40.00" 1016 mm	44.38" 1127 mm	9	100.75" 2559 mm	25.00" 635 mm	38.00" 965 mm	1.00" 25 mm	975 lbs. 442 kg
36A-36	162 sq. ft. 15.0 sq. m	36	9.00 SCFM 15.3 SCMH	48.00" 1219 mm	52.38" 1330 mm	11	52.75" 1340 mm	25.00" 635 mm	10.00" 254 mm	1.00" 25 mm	850 lbs. 386 kg
60A-36	265 sq. ft. 24.6 sq. m	36	9.00 SCFM 15.3 SCMH	48.00" 1219 mm	52.38" 1330 mm	11	76.75" 1949 mm	25.00" 635 mm	14.00" 356 mm	1.00" 25 mm	1100 lbs. 499 kg
84A-36	368 sq. ft. 34.2 sq. m	36	9.00 SCFM 15.3 SCMH	48.00" 1219 mm	52.38" 1330 mm	11	100.75" 2559 mm	25.00" 635 mm	38.00" 965 mm	1.00" 25 mm	1325 lbs. 601 kg
60A-49	361 sq. ft. 33.5 sq. m	49	12.25 SCFM 20.8 SCMH	56.00" 1422 mm	60.38" 1534 mm	13	76.75" 1949 mm	25.00" 635 mm	14.00" 356 mm	1.00" 25 mm	1400 lbs. 635 kg
84A-49	502 sq. ft. 46.6 sq. m	49	12.25 SCFM 20.8 SCMH	56.00" 1422 mm	60.38" 1534 mm	13	100.75" 2559 mm	25.00" 635 mm	38.00" 965 mm	1.00" 25 mm	1700 lbs. 771 kg
60A-64	469 sq. ft. 43.7 sq. m	64	16.00 SCFM 27.2 SCMH	64.00" 1626 mm	68.38" 1737 mm	15	76.75" 1949 mm	25.00" 635 mm	14.00" 356 mm	1.50" 38 mm	1625 lbs. 737 kg
84A-64	656 sq. ft. 61.0 sq. m	64	16.00 SCFM 27.2 SCMH	64.00" 1626 mm	68.38" 1737 mm	15	100.75" 2559 mm	25.00" 635 mm	38.00" 965 mm	1.50" 38 mm	1975 lbs. 896 kg
60A-81	596 sq. ft. 55.4 sq. m	81	20.25 SCFM 34.4 SCMH	72.00" 1829 mm	76.38" 1940 mm	17	76.75" 1949 mm	35.50" 902 mm	14.00" 356 mm	1.50" 38 mm	1975 lbs. 896 kg
84A-81	830 sq. ft. 77.0 sq. m	81	20.25 SCFM 34.4 SCMH	72.00" 1829 mm	76.38" 1940 mm	17	100.75" 2559 mm	35.50" 902 mm	38.00" 965 mm	1.50" 38 mm	2375 lbs. 1077 kg
60A-100	736 sq. ft. 68.4 sq. m	100	25.00 SCFM 42.5 SCMH	80.00" 2032 mm	84.38" 2143 mm	19	76.75" 1949 mm	35.50" 902 mm	14.00" 356 mm	1.50" 38 mm	2275 lbs. 1032 kg
84A-100	1024 sq. ft. 95.0 sq. m	100	25.00 SCFM 42.5 SCMH	80.00" 2032 mm	84.38" 2143 mm	19	100.75" 2559 mm	35.50" 902 mm	38.00" 965 mm	1.50" 38 mm	2750 lbs. 1247 kg



TOP VIEW



Power requirements

Air supply: 95-110 PSIG (6.5 to 7.6 barg) with suitable water and air filtration

Electrical supply: 110/120 volt, 50/60 Hz

Specifications subject to change without notice.

Dynamic Air Conveying Systems® and Modu-Kleen® are U.S. registered trademarks of Dynamic Air Inc., St. Paul, MN, USA.

© 2003, Dynamic Air Inc. • Printed in U.S.A. • Bulletin 937-2 (dm) (UK 3/08)



Corporate Headquarters

Dynamic Air Inc., 1125 Willow Lake Blvd., St. Paul, MN 55110-5193
Phone +1 651 484-2900 • Fax +1 651 484-7015

United Kingdom

Dynamic Air Ltd., 26 Peverel Drive, Granby, Milton Keynes, MK1 1QZ
Phone +44 (0)1908 622344 • Fax +44 (0)1908 646633

www.dynamicair.com