



### Divert dusty, granular or abrasive material up to fifteen positions without cross-contamination or dusting

The Multi-Port Switch automatically diverts granular materials from a single source, such as a pneumatic conveying system, to as many as fifteen different bins, hoppers, or silos as required. The full-bore design permits unrestricted material flow to minimize material degradation and pressure drop to make conveying easier,

with less energy. Cohesive, hard-to-handle, or fragile materials can be conveyed with better results. The unique design allows the switch to be located in any position and be tolerant of very fine non-abrasive, or coarse abrasive materials. Welds are smooth, so there are no dead spots for material to collect, making the Multi-Port Switch ideal for food products or other applications where cross-contamination is a major concern.

### Inflatable air seals eliminate dust problems

Primary components of the Multi-Port Switch are the inflatable seals which provide a sealing pressure of 100 PSIG. The seals are located at the lower pivot point and at each outlet port connection.

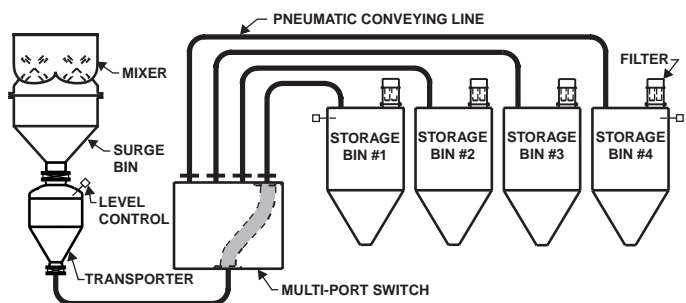
When the swing tube indexes to the desired port, both the top and bottom seals inflate, squeezing the swing tube from both directions to form a dust-tight pressure seal. The blind or unused ports are similarly sealed when the swing tube is not moving, so hoppers and bins are not exposed to the atmosphere.

To index the swing tube to a new position, the seals are deflated, giving the swing tube clearance to rotate freely 360° around the center support shaft with minimal friction and effort. The heavy-duty center shaft and bearing assembly supports the swing tube.

### Features

- Dust-tight design
- Positive indexing
- Positive inflatable air seals
- 60° spout angle
- Up to fifteen positions
- Fully enclosed
- Position indicators standard
- Full flow design
- Heavy-duty frame
- Quiet, smooth operation
- Fully automatic
- 100 PSIG rated
- Weather protected
- Clear acrylic access doors

### Typical application

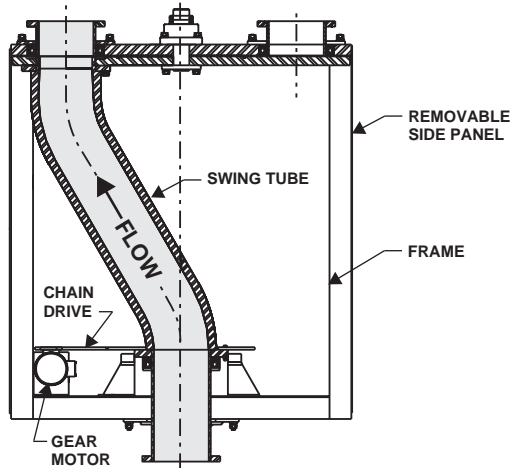


### The Multi-Port Switch will handle most dry bulk materials:

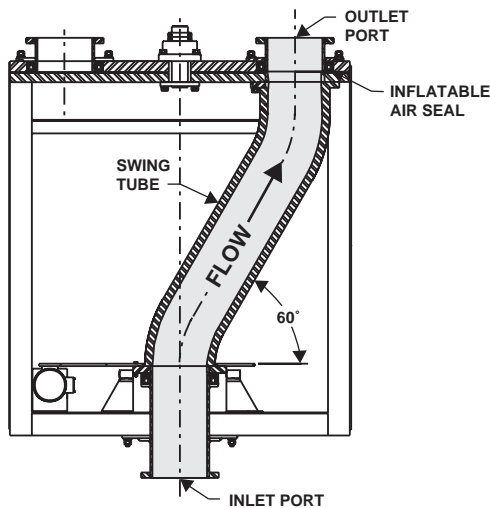
- Alumina
- Ball clay
- Barite
- Bauxite
- Bentonite
- Borax
- Calcium carbonate
- Cement
- Dolomite
- Feldspar
- Fine coal
- Fluorspar
- Fly ash
- Glass batch
- Gypsum
- Iron oxide
- Kaolin clay
- Lime
- Milk powder
- PVC resin
- Quartz
- Silica sand
- Soda ash
- Sodium sulfate
- Sugar
- Talc
- **And more**

## How the Multi-Port Switch works

The swing tube rotates 360°, powered by a gear motor and chain drive. A position indicator is activated to allow the swing tube to stop at the desired position (Position 1). The air seals are then inflated to provide a pressure-tight connection at both ends of the swing tube and on the blind, or unused, ports. When the swing tube is moved to any of the other positions, the air seals first deflate. The swing tube is then allowed to rotate to the next position and the sequence is repeated (Position 2).



Position 1

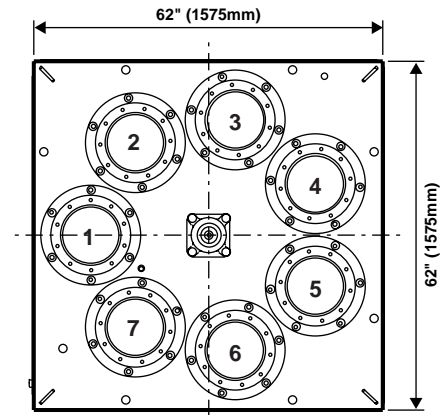


Position 2

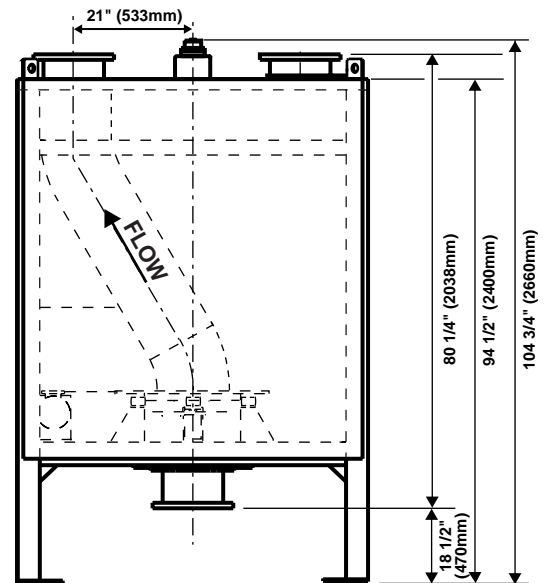
## Options

- Stainless steel construction
- Food grade construction
- Ceramic-lined swing tube
- Number of outlet ports
- Custom-size ports
- Explosion-proof
- Special motors
- Electrical control panel

## Dimensions and specifications



Top View (10" - 7 Position)



Side View (10" - 7 Position)

## Power requirements

Compressed air supply: 90-100 PSIG (6.2-6.9 bar)  
 Electrical supply: 230/460 volt, 3 phase, 60 hertz  
 120 volt, single phase, 60 hertz

## Shipping weight

10" - 7 position model - 6000 pounds (2722 kg)

## Operating temperature

150° F (66° C)

Standard sizes available: 2" (50mm), 3" (75mm), 4" (100mm), 5" (125mm), 6" (150mm), 8" (200mm), 10" (250mm), 12" (300mm), 14" (350mm), 16" (400mm), and 20" (500mm). Custom sizes available upon request.

Dimensions and specifications will vary according to size and configuration and are subject to change without notice.