



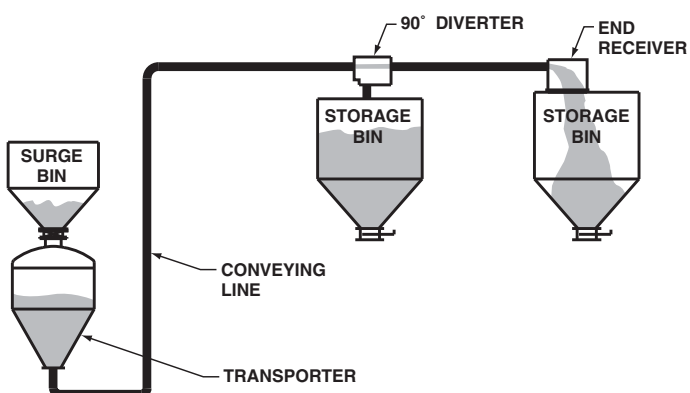
Compact, abrasion resistant

The Dynamic Air 90° Diverter is a reliable, low cost, compact and simple design of heavy duty construction. A positive rubber-to-rubber seal is created by the internal flapper which presses against the unused port. The seal improves as the conveying pressure increases, ensuring better performance against leakage in even the most severe dry bulk solids applications.

Features

- Abrasion resistant
- Positive sealing to 100 PSIG
- Full port design
- Economical
- Compact, low profile
- Low maintenance
- Position sensors standard

Typical Application



The 90° Diverter will convey:

- | | |
|---------------------|-------------------|
| ■ Alumina | ■ Fluorspar |
| ■ Ball clay | ■ Fly ash |
| ■ Barite | ■ Kaolin clay |
| ■ Bauxite | ■ Lime |
| ■ Bentonite | ■ Quartz |
| ■ Borax | ■ Silica sand |
| ■ Calcium carbonate | ■ Soda ash |
| ■ Cement | ■ Sodium sulfate |
| ■ Feldspar | ■ Sugar |
| ■ Fine coal | ■ Talc |
| | ■ And More |

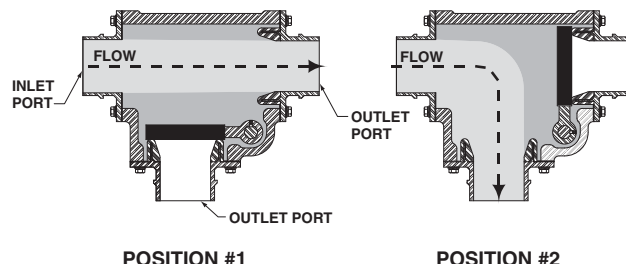
How the 90° Diverter works

When the 90° Diverter is in Position 1, the internal flapper pushes against the unused outlet port and material conveys straight through to the desired destination. The flapper, which is moved by an air operator, only has to provide enough pressure to provide an initial seal. The conveying pressure then generates additional sealing pressure to provide a tighter seal.

During conveying, a pocket of conveyed material is instantly formed in front of the flapper, creating a shield to help protect against abrasion or wear of the internal parts. This greatly diminishes wear and increases product life with most materials conveyed. A limit switch is provided to indicate positive verification of position during the conveying process.

Options

- Custom flapper and seal material
- Air operator mounted on either side of diverter
- Increased outlet port sizes
- Voltages (24 VDC, 220 VAC)
- Electric actuation



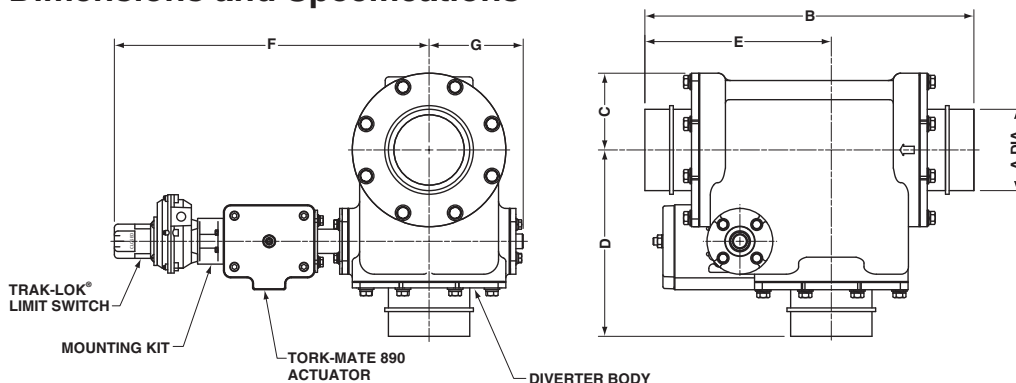
Construction features

The rugged one piece body of the 90° Diverter is made of heavy duty cast iron. Inlet and outlet seals are made using an extremely tough abrasion resistant rubber compound.

The air operator is a totally enclosed unit without external moving parts. It easily operates in harsh outside elements such as rain or snow.

All wearing components are easily replaceable without completely dismantling the diverter itself.

Dimensions and Specifications



SERIES 237 DIMENSIONS								
SIZE	A	B	C	D	E	F	G	SHIP WT.
2-inch	2.375"	18.00"	3.75"	10.12"	10.12"	18.88"	5.00"	200 lbs.
50mm	60mm	457mm	95mm	257mm	257mm	480mm	127mm	91kg
3-inch	3.50"	18.00"	3.75"	10.12"	10.12"	18.88"	5.00"	200 lbs.
75mm	89mm	457mm	95mm	257mm	257mm	480mm	127mm	91kg
4-inch	4.50"	18.00"	3.75"	10.12"	10.12"	18.88"	5.00"	200 lbs.
100mm	114mm	457mm	95mm	257mm	257mm	480mm	127mm	91kg
SERIES 229 DIMENSIONS								
4-inch	4.50"	22.50"	5.25"	12.75"	12.75"	21.50"	6.44"	250 lbs.
100mm	114mm	572mm	133mm	324mm	324mm	546mm	164mm	113kgs
5-inch	5.56"	22.50"	5.25"	12.75"	12.75"	21.50"	6.44"	250 lbs.
125mm	141mm	572mm	133mm	324mm	324mm	546mm	164mm	113kgs
6-inch	6.63"	22.50"	5.25"	12.75"	12.75"	21.50"	6.44"	250 lbs.
150mm	168mm	572mm	133mm	324mm	324mm	546mm	164mm	113kgs

Standard Operating Characteristics	
Air supply	1/4-inch NPT
	80 to 115 PSIG
Operating voltage	120 volt 60 cycle
	110 volt 50 cycle
Operating temperature	150° F
	66° C
Pressure rating	100 PSIG
	6.9 barg

Note: Series 229 and 237 90° Diverters are available with increased outlet ports. For example, a 2-inch diverter is available with 2-inch, 3-inch or 4-inch outlet ports.

Specifications subject to change without notice.

Dynamic Air Conveying Systems® is a U.S. registered trademark of Dynamic Air Inc., St. Paul, MN USA.

© 2018, Dynamic Air Inc. • Bulletin 9521-3 (dm3)

DYNAMIC AIR[®]
Conveying Systems

Corporate Headquarters

Dynamic Air Inc. • St. Paul, MN USA • +1 651 484-2900

Worldwide Offices

Brazil • China • United Kingdom

www.dynamicair.com